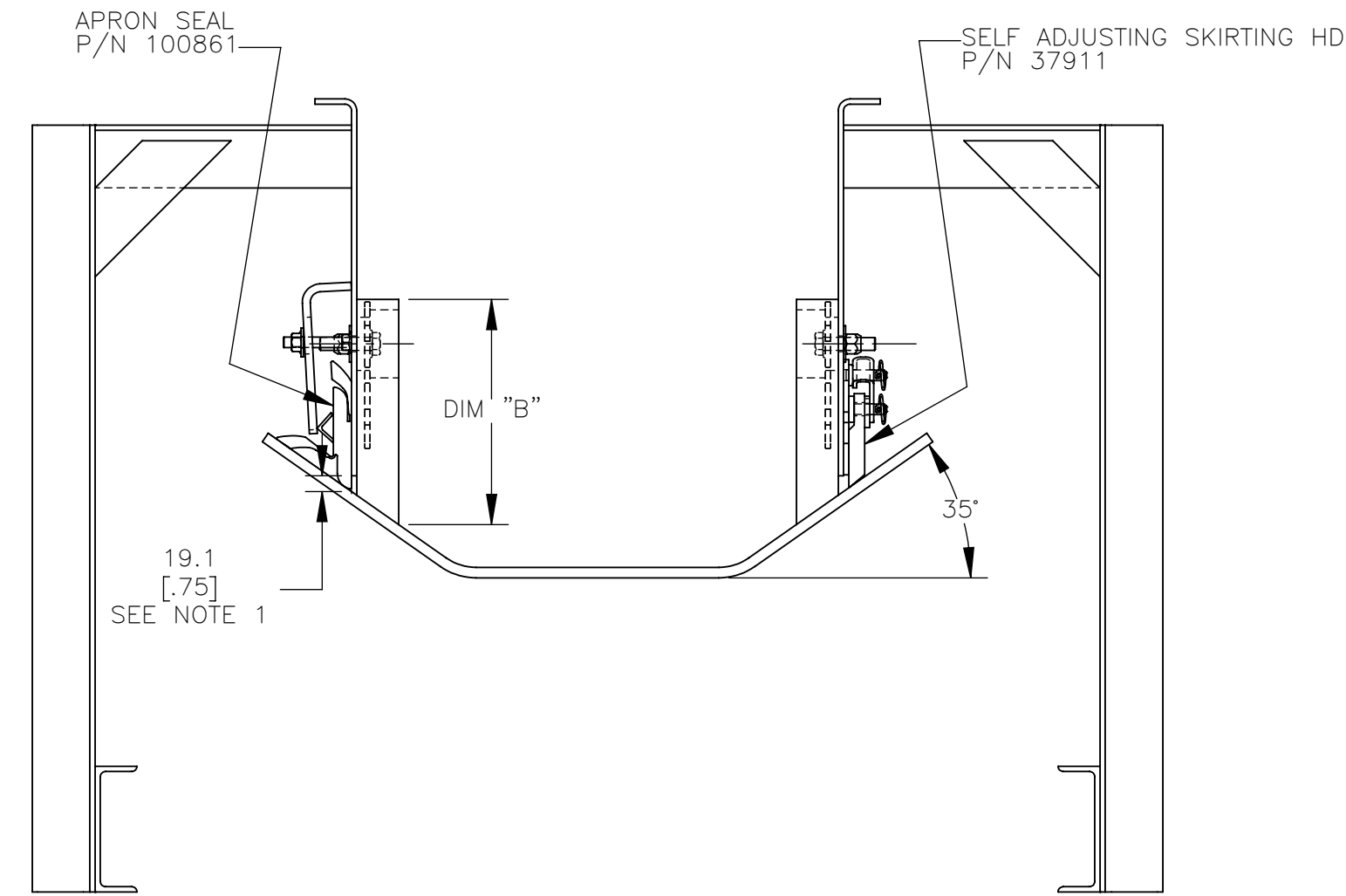
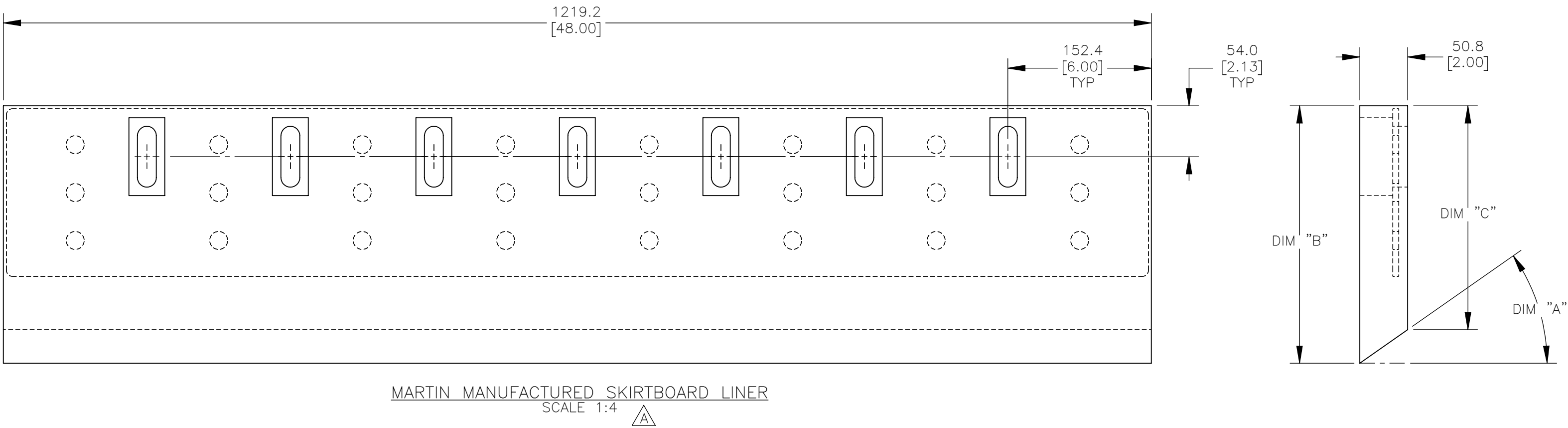
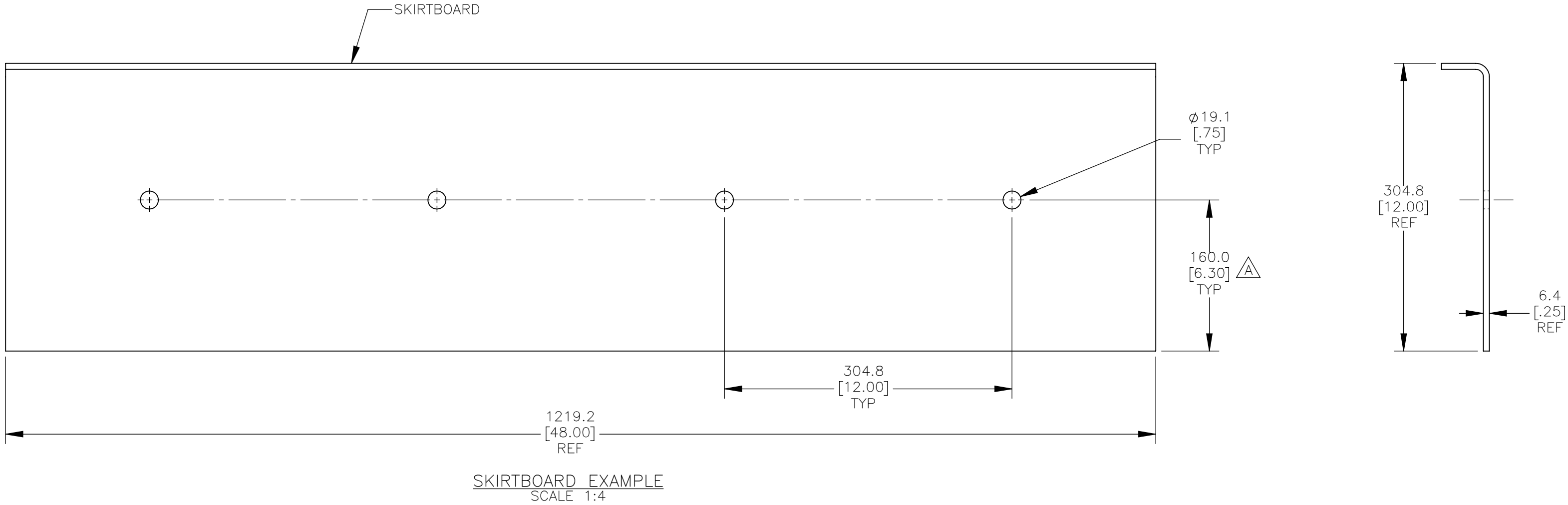


INSTALLATION OF CDWIUS20S483K



INSTALLATION OF CDWIUS20S483K



MARTIN MANUFACTURED SKIRTBOARD LINER

DIM "A" TROUGH ANGLE	DIM "B" MM [IN]	DIM "C" MM [IN]
	CDWIUS20S48XK*	CDWIUS20S48XK*
20 DEGREES	251.0 [9.88]	232.4 [9.15]
35 DEGREES	273.1 [10.75]	237.5 [9.35]
45 DEGREES	292.1 [11.50]	241.3 [9.50]

* THE "X" IN PART NUMBER INDICATES BELT TROUGH ANGLE:
2 = 20 DEGREES
3 = 35 DEGREES
4 = 45 DEGREES

- NOTES:
- MARTIN ENGINEERING RECOMMENDS CHUTEWALL TO BE WITHIN 19 [.75] OF BELT.
 - WHEN BUTTING ENDS OF SKIRTBOARD LINERS TOGETHER, IT IS IMPORTANT THAT THE BOTTOM EDGES ARE FLUSH.
 - SKIRTBOARD LINERS ARE USED TO PREVENT THE MAIN LOAD FROM CONTACTING THE SKIRTING.
 - START WITH BOTTOM EDGE OF SKIRTBOARD LINER 9.5 [.38] OFF THE BELT SURFACE TAPERING TO 19.1 [.75] AT THE EXIT OF LOAD ZONE.
 - EACH SECTION OF SKIRTBOARD LINER INCLUDES ENOUGH 5/8 HARDWARE TO ATTACH AT 304.8[12.00] INTERVALS TO SKIRTBOARD.

A				IN THE DWG DESCRIPTION & NOTES, CHGD "CANOE" TO "SKIRTBOARD" / CHGD DIM FROM 168.4 TO 160.0				16607	10/15/24	JAH	<div>TITLE</div> <div>SKIRTBOARD LINER INSTALLATION CDWIUS20S48XK</div>	ENG. DATE <i>JRB</i> <i>01/26/23</i>	
REV	DESCRIPTION			ECN	DATE		BY	<div></div>				I.E. DATE <i>JRB</i> <i>01/26/23</i>	
MATERIAL: —			FINISH: —			WEIGHT: —			DRAWING NUMBER			APPROVED <i>JRB</i> <i>01/26/23</i>	
UNLESS OTHERWISE SPECIFIED, DIMENSIONS ARE IN MM [INCH]				TOLERANCES IN MM [INCH]: X = ±. XX = ±. XXX = ±.				SURFACE FINISH: ANGULAR: ±1 DRAFT ANGLE: —				DATE <i>01/26/23</i>	
SOLIDWORKS								PR14448				S50147	
												SCALE 1:8	